

# MIAMI™

GREATER MIAMI & MIAMI BEACH

## CRUISE GUIDE



**PORTMIAMI**  
CRUISE CAPITAL OF THE WORLD

**MIAMI**  
GREATER MIAMI & MIAMI BEACH

GREATER MIAMI  
CONVENTION &  
VISITORS BUREAU





**PORTMIAMI**  
Cruise Capital of the World

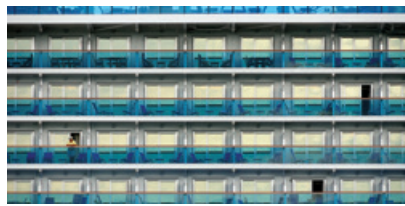
# CRUISE ADVENTURES AWAIT



[PortMiami.biz](http://PortMiami.biz)







# CONTENTS

- 4 WELCOME MESSAGE FROM MIAMI-DADE MAYOR DANIELLA LEVINE CAVA
- 5 WELCOME MESSAGE FROM PORT DIRECTOR HYDI WEBB
- 6 DISCOVER PORTMIAMI / DISCOVER GREATER MIAMI & MIAMI BEACH
- 7 TRANSPORTATION, PARKING & LUGGAGE STORAGE
- 8 MAP OF PORTMIAMI
- 10 THINGS TO DO IN MIAMI PRE & POST CRUISE
- 16 FAST FACTS
- 18 CRUISE LINE PARTNERS





## WELCOME MESSAGE FROM MIAMI-DADE COUNTY MAYOR DANIELLA LEVINE CAVA

PortMiami is a vital economic engine that supports more than 334,500 jobs and contributes \$43 billion to Florida's economy. As the Cruise Capital of the World™, PortMiami continues to drive Miami-Dade's economy forward, creating opportunities for residents across our county.

Last year, PortMiami welcomed 4,022,544 cruise travelers, despite the worldwide pandemic – and we're still growing! We're completing multiple shore-powered terminals to protect our environment, creating new access roadways, and introducing innovative technology to support fast and efficient passenger operations.

Our success would not be possible without our dedicated workforce and strong partners. Our vision for a greener, more resilient industry and our shared commitment to Miami-Dade and its residents unite us as we provide every Port user the world-class experience they deserve.

It is both an honor and privilege to work with the PortMiami Family!

With gratitude,

A handwritten signature in cursive script that reads "Daniella Levine Cava". The signature is written in a dark ink and is enclosed within a thin rectangular border.

Daniella Levine Cava,  
Mayor, Miami-Dade County







## WELCOME MESSAGE FROM PORT DIRECTOR HYDI WEBB

It is my distinct honor to address the Port's constituents as the first female Director of PortMiami. I will call upon 30 years of experience at the Port, under four different Directors, to ensure PortMiami's future looks brighter than ever before.

PortMiami understands that continued communications in the present with our cruise and cargo partners will mean continued operational certainty in the future. We continue to hit post-pandemic benchmarks as we build back our cruise business better than ever. The groundbreaking of MSC's new super terminal, the completion of Terminal V for Virgin Voyages, and the expansion of Terminal F for Carnival are the latest capital developments to increase the capacity at the Port. We are ready to welcome more cruise passengers than ever before!

As PortMiami returns to normal cruise numbers and operations, we will be sure not to forget those lessons learned during the lean years. Our staff is thankful for their jobs created by the cruise industry. The Port is nothing without the dedicated men and women who work hard to honor our status as the Cruise Capital or the World™. We thank our Mayor and County Commissioners for the continued support of our efforts. We are proud to be part of this community.

Warm regards,

A handwritten signature in cursive script that reads "Hydi Webb".

Hydi Webb,  
Port Director





# DISCOVER PORTMIAMI

PortMiami is iconic for cruising. Passengers love the exceptional variety of cruise lines to choose from, the new state-of-the-art cruise terminals and the proximity to incomparable voyage itineraries, such as the Caribbean, Mexico, Central America and beyond. The Port is well-served by both the easy-access Interstate Highway system and the high-capacity Miami International Airport, bringing in visitors from around the world looking to enjoy the regional sun and fun. It's no wonder PortMiami is the Cruise Capital of the World™. PortMiami welcomed more than 4 million cruise vacationers in 2022, with plans to exceed that number going forward.

# DISCOVER GREATER MIAMI & MIAMI BEACH

PortMiami is more than just the Cruise Capital of the World™, it's also part of a vibrant destination known for its pristine beaches, lively arts and culture scene, two national parks, fine dining, great shopping and multicultural neighborhoods. More and more passengers are choosing to enhance their getaway by spending several days pre- or post-cruise to soak up everything Greater Miami & Miami Beach has to offer. Whatever you're looking for, you can find it here when you extend your cruise vacation.







## TRANSPORTATION, PARKING & LUGGAGE STORAGE

If you're driving to PortMiami, plug this address into your GPS: **1015 North America Way, Miami, FL, 33132**.

Once you get there, follow the signs to the cruise terminals.

### CAR SERVICES AND TAXIS

Taxis are a good option to get you to PortMiami on time for your cruise. Some rental car agencies and nearby hotels offer courtesy shuttle service to and from the Port. You can also open your favorite ridesharing app to come pick you up and drop you off at the terminal. Please access the Port's directory at [miamidade.gov/portmiami](http://miamidade.gov/portmiami) for a complete list of ground transportation companies authorized to conduct business at PortMiami.

### PUBLIC TRANSPORTATION

The only public transit that goes directly to PortMiami is the City of Miami's Coral Way Route Trolley. If you are in Downtown Miami, catch it at Government Center Station, where it connects with Metrorail, Metromover, Metrobus and Brightline.

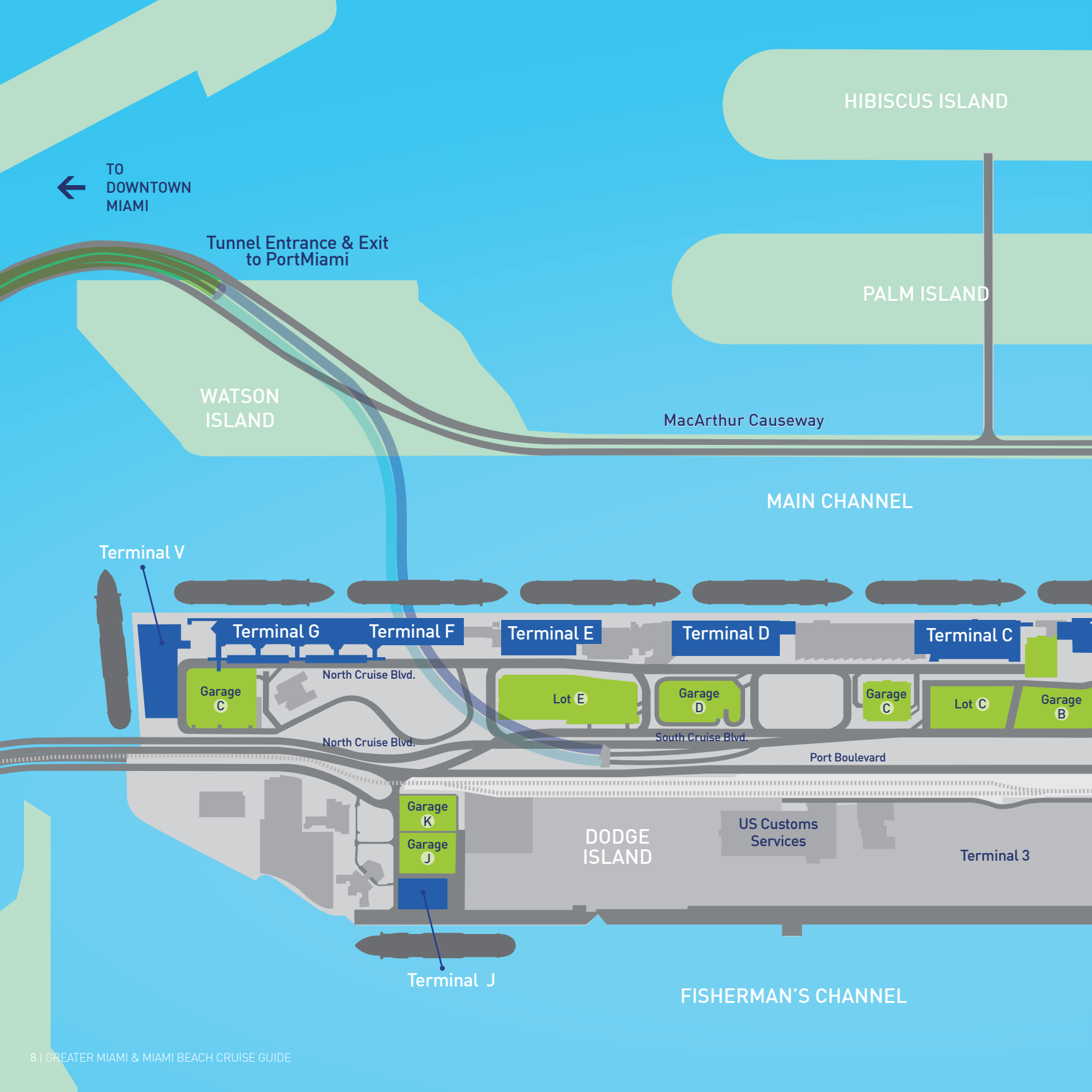
### PORTMIAMI PARKING RATES

The long-term cruise parking rate is \$22 per night, while the daily rate is \$8 for short-term parking. The Royal Caribbean Terminal A garage rates are \$25 per day for sailings of six days or more, \$28 per day for sailings of five nights or less, and \$10 for daily visitors. There is no reserved parking available. All facilities are patrolled by our Safety and Security Division on a 24/7 basis. Oversized vehicles (more than 20 feet long) are charged an extra \$22 per day and can park in Lot # 2, directly across from Cruise Terminal E. PortMiami Parking accepts cash and all major credit cards at the toll collector booths. The Miami Parking Authority offers extended parking options at the nearby College Station garage, with a dedicated ride-share pickup location to connect to PortMiami. It's only \$10 per day, with a minimum of three days. Visit [miamiparking.com/vacation-parking](http://miamiparking.com/vacation-parking) to reserve a spot. If you need to park within the next three days, call **305-373-6789**.

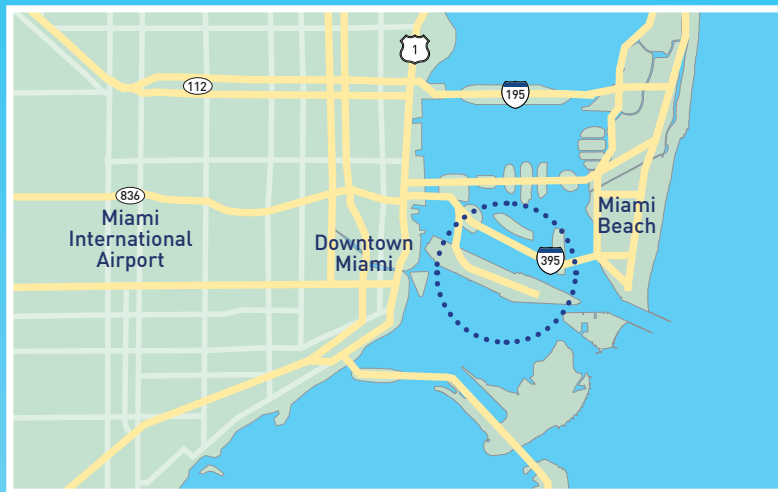
### LUGGAGE STORAGE

Hold My Luggage offers a safe place to store luggage pre- or post-cruise as well as luggage delivery to and from the airport and local hotels. Visit [holdmyluggage.com](http://holdmyluggage.com) or call **1-800-227-2021** for more information.









TO  
MIAMI  
BEACH

TERMINAL  
ISLAND

Fisher Island Ferry Terminal



FISHER  
ISLAND

ATLANTIC OCEAN



# THINGS TO DO IN MIAMI PRE & POST CRUISE

## GET READY TO EXPLORE MIAMI BEFORE OR AFTER YOUR DREAM CRUISE VACATION

Greater Miami & Miami Beach is a wonderful place to embark on a dream cruise vacation. Pair your cruise with some “on land” time in Miami, and explore exciting neighborhoods just minutes away from PortMiami. Even if you have just a few hours to spend before or after your cruise, you’ll find plenty of things to explore.

Here are itineraries to make the most of your time before or after your cruise, whether you’re here for just a few hours or have a full day (and night) to indulge in Miami’s fabulous food, culture and sightseeing.







# IF YOU HAVE FOUR HOURS

## MORNING: ANIMAL ADVENTURE OR ART & ARCHITECTURE

PortMiami is located near many popular attractions, so you'll want to be out the door early in the morning to maximize your time. Nature lovers and families will want to be first in line when nearby **Jungle Island** opens. Located on Watson Island, directly across from PortMiami, the 18-acre park offers exhibits and interactions with exotic animals as you wander through lush gardens. Snacks and drinks are available throughout the park. Jungle Island is also home to **Treetop Trekking Miami**, an aerial adventure park with ziplines, suspended bridges and much more. If you're traveling with the kids, be sure to check out **Miami Children's Museum**, also located on Watson Island.

Another great morning option would be hopping in a taxi or rideshare to take you across the scenic MacArthur Causeway to **Miami Beach**. Ask to be dropped off at the **Art Deco Welcome Center** for the walking tour. Learn about Miami Beach's architectural history as you take in the lovely pastel palette of Art Deco, Streamline Moderne and Mediterranean Revival jewels, and snap epic selfies next to icons such as **The Villa Casa Casuarina** (the former home of designer Gianni Versace). Afterward, grab a bite at one of the many excellent restaurants in South Beach.







# IF YOU HAVE SIX HOURS

## MORNING: ART & SCIENCE IN DOWNTOWN MIAMI

Spend the morning at **Maurice A. Ferré Park** in **Downtown Miami**, where the wonders of science and artistic inspiration intersect. On this sprawling green space with wonderful views of Biscayne Bay, you'll find two landmark museums: the **Phillip and Patricia Frost Museum of Science** and the **Pérez Art Museum Miami (PAMM)**.

The Phillip and Patricia Frost Museum of Science is among Miami's most impressive attractions. At the forefront of technology and sustainability, it features a 3D planetarium and an aquarium with a 31-foot-wide oculus lens allowing visitors to see sharks and other fascinating marine life swimming above them. The exhibits, interactive stations and animal encounters are so interesting that you may lose track of time if you're not careful.

Art enthusiasts won't want to miss the stunning Herzog & de Meuron-designed Pérez Art Museum Miami (PAMM). Outside the museum, you'll find dramatic hanging gardens and swings that comprise a sculptural installation ("Netscape" by Konstantin Grcic). Inside, you'll find a stunning collection of contemporary international artworks of the 20th and 21st centuries, as well as a curated selection of books, accessories and decorative art in the gift shop. If you'd like to have a coffee break or lunch onsite, the **Verde** restaurant and bar offers beautiful waterfront views.





## LUNCH: HIGH NOON IN HIGH STYLE IN BRICKELL

If you opted not to eat at PAMM, hop on the **Metromover**, a free automated service that loops around Downtown Miami and Brickell. As you travel, enjoy views of such Downtown Miami landmarks as the **Adrienne Arsht Center for the Performing Arts**, the **Kayesa Center** (home of the Miami HEAT) and yachts on the Miami River before you hop off at **Brickell City Centre**. This mixed-use development spanning several blocks in Miami's banking and financial district offers four levels of upscale retail shops, a luxury movie theater and many restaurant options.



## AFTERNOON: LITTLE HAVANA

Depending how long you linger at Brickell City Centre, you might have just enough time to get a taste of **Little Havana**. Located close to Downtown Miami and boasting its own distinctive Cuban flavor, this neighborhood is a multicultural hub for Latin music, food, shopping, a vibrant arts and culture scene, and authentic hand-rolled cigars along world-famous **Calle Ocho** (Southwest 8th Street). This is the place to rock a *guayabera* and sip *café con leche* on your way to see the action at **Domino Park**.





# IF YOU HAVE A FULL DAY (AND EVENING)

## MORNING: BREAKFAST AND SHOPPING IN SOUTH BEACH

Get out early and head to **South Pointe Park** in **South Beach** to join the locals for a relaxing stroll or bike ride on the wide **Beachwalk**, and be sure to check out the **South Pointe Pier**. The iconic sidewalk restaurants along **Ocean Drive** serve delicious breakfasts with a side of people-watching, and it's fun to watch the seaside city slowly waking up. Some shopping is in order, so after exploring the boutiques along Ocean Drive, head over to **Collins Avenue**, **Washington Avenue** and **Española Way**.





## AFTERNOON: SIGHTSEEING IN COCONUT GROVE

Take a car, cab or rideshare to get a taste of **Coconut Grove's** Bahamian and bohemian roots and enjoy its beautifully shaded streets, neighborhood eateries and bayfront parks where resident peacocks roam. Visit **Vizcaya Museum and Gardens**, a magnificent Italian villa nestled on 10 acres with manicured gardens and fountains. Treat yourself to a late lunch or grab a snack and spend your time shopping in the Grove's boutiques and upscale retail centers.



## EVENING: CORAL GABLES

In the evening, explore elegant **Coral Gables**, where the architecture and plazas will make you feel like you've been transported to the Mediterranean. The legendary **Biltmore Hotel** tower is a can't-miss landmark in "The City Beautiful," and there are many wonderful restaurants and cafes along **Miracle Mile** and the **Giralda Avenue** pedestrian thoroughfare where you can enjoy a leisurely dinner.





## FAST FACTS

PortMiami is a 520-acre island port with nine iconic cruise passenger terminals designed by world-famous architects.

PortMiami generates \$43 billion for the economy and supports 334,500 jobs in Florida.





One out of every seven Miami International Airport arrivals are PortMiami cruise passengers.

Cruise terminal resiliency and sustainability efforts, such as Shorepower, are coming by the end of 2023.





# CRUISE LINE PARTNERS

---



**AZAMARA**  
azamara.com



**EXPLORA JOURNEYS**  
explorajourneys.com



**NORWEGIAN CRUISE LINE**  
ncl.com



**CARNIVAL CRUISE LINE**  
carnival.com



**HAPAG-LLOYD**  
hl-cruises.com



**OCEANIA CRUISES**  
oceaniacruises.com



**CELEBRITY CRUISES**  
celebritycruises.com



**HOLLAND AMERICA LINE**  
hollandamerica.com



**P&O CRUISES**  
pocruises.com



**CRYSTAL CRUISES**  
crystalcruises.com



**HURTIGRUTEN**  
hurtigruten.com



**PHOENIX REISEN**  
phoenixreisen.com



**DISNEY CRUISE LINE**  
disneycruise.com



**MSC CRUISES**  
msccruisesusa.com



**PONANT**  
us.ponant.com



---

**Cruise Capital of The World™**



Cruise lines love the Port for its exceptional location, innovative facilities and superior service. PortMiami's strategic capital investments support the long-term growth of its cruise partners and help pave the way for their ongoing success.









# PORTMIAMI

Cruise Capital of the World

## MAKE IT MIAMI FOR YOUR NEXT CRUISE ADVENTURE

MIAMI-DADE  
COUNTY

PortMiami.biz







GREATER MIAMI  
CONVENTION &  
VISITORS BUREAU

MiamiandMiamiBeach.com



VisitMiami



PORTMIAMI



PORTMIAMI

1015 North America Way, Miami, FL 33132 USA

305-347-4800

PortMiami.biz



PortMiami.Dade



PortMiami



Scan to learn more about  
cruising from PortMiami.

Greater Miami Convention & Visitors Bureau  
The Official Destination Sales & Marketing Organization  
for Greater Miami & Miami Beach // CS-04189

